

# Donovan

Shur-Co<sup>®</sup>, LLC

Tarps • Tarp Systems • Parts & Accessories





# DUMP BODY SYSTEMS



## BULLET

- Covers up to 23' bodies
- Your choice:
  - Electric or crank
  - Rotary switch or rocker with solenoid
  - 3-year motor warranty
  - Straight or 30° bend arms
- Approx. shipping weight: 150 lbs.



## Flash

- Covers up to 23' bodies
- Rotary switch kit
- "Unbreakable" extruded aluminum arms
- Unique, patented heavy-duty spring housings
- Optional 30° bend arms
- Approx. shipping weight: 225 lbs.



## HAMMER

- Covers up to 23' bodies
- Heavy-duty steel arms
- Your choice:
  - Electric or crank
  - Rotary switch or rocker with solenoid
  - 3-year motor warranty
- Approx. shipping weight: 220 lbs.



## 5000 series

- Covers up to 18' bodies
- Electric or crank
- Rotary switch kit
- Low-profile arms
- Sturdy 1.25" steel square tube arms
- Approx. shipping weight: 85 lbs. - 165 lbs.



## 2000 series

- Armless front to rear tarp system
- Automatic tarp return (2000SR)
- Manual crank tarp return (2000X)
- Quick & easy install!
- 2000SR Approx. shipping weight: 110 lbs.
- 2000X Approx. shipping weight: 37 lbs.



## TurboTarp2

- Manual wind-up
- Installs in minutes!
- Expands from 60" to 104"
- Perfect for landscapers & light-duty bodies
- Quick & easy tarp replacement
- Approx. shipping weight: 35 lbs. - 45 lbs.



# ROLL OFF SYSTEMS



- Strongest tarper available today!
- Ratchet tensioner for safe, easy, roller spring tensioning
- Pre-assembled for easy install
- Covers 15-40 cubic yard containers
- Approx. shipping weight: 1800 lbs.



- Affordable & durable!
- Covers up to 40 cubic yard containers
- Unbreakable pivot arms - 40° bend, low profile
- No cylinders on arms cut repair costs
- Hydraulic power gantry & tarp roller
- Approx. shipping weight: 850 lbs.



- Industry's #1 armless tarper
- Covers up to 40 cubic yard containers
- Gantry raises 15' above truck frame
- Lifetime spring warranty!
- Perfect for narrow city streets
- Approx. shipping weight: 700 lbs.



- Thousands sold!
- Covers up to 40 cubic yard containers
- Gantry raises 12' above truck frame
- Lifetime spring warranty!
- Perfect for narrow city streets
- Approx. shipping weight: 800 lbs.



**SIDEWINDER**

- Industry's #1 tarp system!
- The Original side-flip tarper for transfer trailers
- Thousands sold!
- Heavy-duty steel construction
- Driver or curb side mount
- Approx. shipping weight: 800 lbs.



**SIDEWINDER 350**

- Only 350 lbs!
- Aluminum I-beam construction
- No welding required!
- Twin cable design eliminates support ladder & bars
- Approx. shipping weight: 450 lbs.



**DOUBLE FLIP**

- Opens or closes in 10 seconds!
- Optional self-contained power kit for tippers
- Choice of vinyl or mesh tarp
- Lids overlap when closed, preventing blowout!
- Approx. shipping weight: 1100 lbs.



**SHUR-TRAK II**  
PREMIUM CABLE

- Universal landing
- Adjustable-width bows
- Rolling wheel windguards or continuous wind anchors
- Durable 1/4" cable
- Cable tension scale
- Rear bow stabilizer
- Vinyl-coated or mesh tarp



# TRAILER SYSTEMS



## Long Arm & Long Arm 41

- Long Arm covers up to 38'
- Long Arm 41 covers 38' - 41' (custom springs)
- "Unbreakable" extruded aluminum arms
- "Unbreakable" underbody springs
- Modular tarp housing included
- Approx. shipping weight: 260 lbs.



- Aluminum latchplate
- Front & rear fabric cap
- Easy-off tarp stops
- Shur-Flex™ crank arm
- Front roll return
- 22-oz. vinyl tarp



- Magnetic braking system
- Universal mounting bracket
- Pivoting motor mount
- Exposed spline
- Spiral spring returns
- Front & rear torsion arms
- SMARTwire™ sealed wire harness
- Flexible joint/elbow with protective rubber boot
- Gate Flex™ option for end dumps
- Available SMART2™ remote



**Long Shaft Durabuilt Direct-Drive Motor**  
Part #61X / 1802066

- 12v / 600w direct-drive motor w/ 3 1/8" output shaft
- 1-year warranty
- Best price!



**Long Shaft Durabuilt Direct-Drive Motor**  
Part #61G / 1802061

- 12v / 600w direct-drive motor
- 3 1/8" output shaft
- 3-year warranty
- Best warranty!



**Heavy-Duty Durabuilt Direct Drive Motor**  
Part #4422 / 1801663

- 12v / 900w direct-drive motor
- 7/8" output shaft
- 3-year warranty
- Extra output for long trailers

**Heavy-Duty Rotary Switch Kit**  
Part #85N / 1802076



**Heavy-Duty Rotary Switch (switch only)**  
Part #600 / 1800120

- Easy install
- Wires directly to battery & motor



**Water-Resistant Rocker Switch**  
Part #1897 / 1800602

- 12 volt
- Mounts in dash or in own bracket (incl.)
- Use with Durabuilt Solenoid Kit

**Solenoid Switch**  
Part #1464 / 1800418

- 12 volt
- Replacement part for #1495 kit



**Durabuilt Solenoid Switch Kit**  
12v, 40 amp Part #1495 / 1800432  
12v, 60 amp Part #1497 / 1800434



**Dual-Pole Trailer Connector**  
Part #3848 / 1801377



**ELD Conversion Kit**  
Part #605 / 1800121

Direct-Drive Electric System Conversion Kit  
(Includes Extruded Alum. Roller Bar #2365 / 1800737)



**Universal Contact Plate**  
Part #4241 / 1801567



**Electric Wire Spools (4 ga., 8 ga.)**  
4 ga. Part #672 / 1800138  
8 ga. Part #2141 / 1800650





# PARTS & ACCESSORIES

**One-Piece Wind Deflector**  
Part #1216K / 1801919



**Two-Piece Galvanized Steel Wind Deflector**  
Part #1647K / 1801943



**Underbody Spring Assemblies**  
Driver Side Part #1166 / 1800320  
Curb Side Part #1165 / 1800319

• Used on Flash™ and Long Arm™ systems



**Extruded Aluminum Roller Bar**  
Part #2365 / 1800737



**Chain Guard (5000)**  
Part #114 / 1800036



**Chain Guard (7000)**  
Upper - Part #790 / 1800185  
Lower - Part #791 / 1800186



**Heavy-Duty Ground Level Crank**  
Part #780 / 1800178

- For bodies 20' and over
- Crank handle folds for low profile
- Separate easy-grip brake for total control



**Crank Assembly**  
Part #441 / 1800088

- 5000 ground level crank box assembly
- Handle grip rotates for low-profile storage



**GL Conversion Kit**  
Part #185 / 1800049



**Flat Coil Springs**  
Part #2416 / 1800763

- Flat coil torsion springs, 5/8"

**Tarp Trap**  
Part #4096 / 1801490



*Tall cab shield hold-downs*

**Spring Trap**  
Part #3976 / 1801434



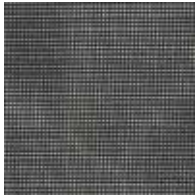
## Mesh Tarp Materials

**MightyMesh®**



- Strongest truck tarp material available today

**Heavy-Duty Black Mesh**



- Heavy-duty mesh for dump truck & trailer applications

**Multi-Color PVC Mesh**



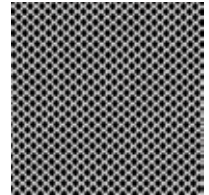
- Industry standard truck tarp material

**Knitted Black Mesh**



- Designed specially for Hy-Tower™
- Rip resistant
- 70% shade

**White Polyester Mesh**



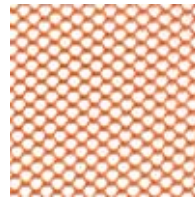
- Good for cold-weather applications



## Tarp Materials

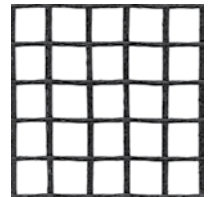


**Heavy-Duty Orange Knit**



- Standard Sidewinder® tarp
- Polyester

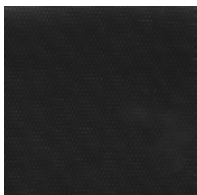
**Heavy-Duty Black Grid**



- Upgrade Sidewinder® tarp
- PVC / Polyester

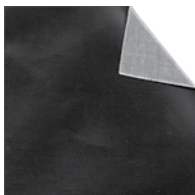
## Asphalt Tarp Material (Waterproof, Water Resistant)

**18-oz. Vinyl**



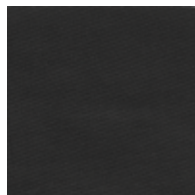
- Waterproof
- 7 color choices

**Donoprene**



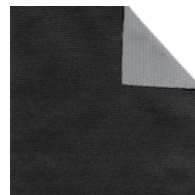
- Waterproof
- Half the weight of vinyl

**Asphalt Lumite**



- Water resistant
- Used for asphalt
- Lighter than vinyl

**Air Bag**



- Water resistant
- Lighter than vinyl

**RFL**



- Water resistant
- Tough to tear
- Good for cold weather